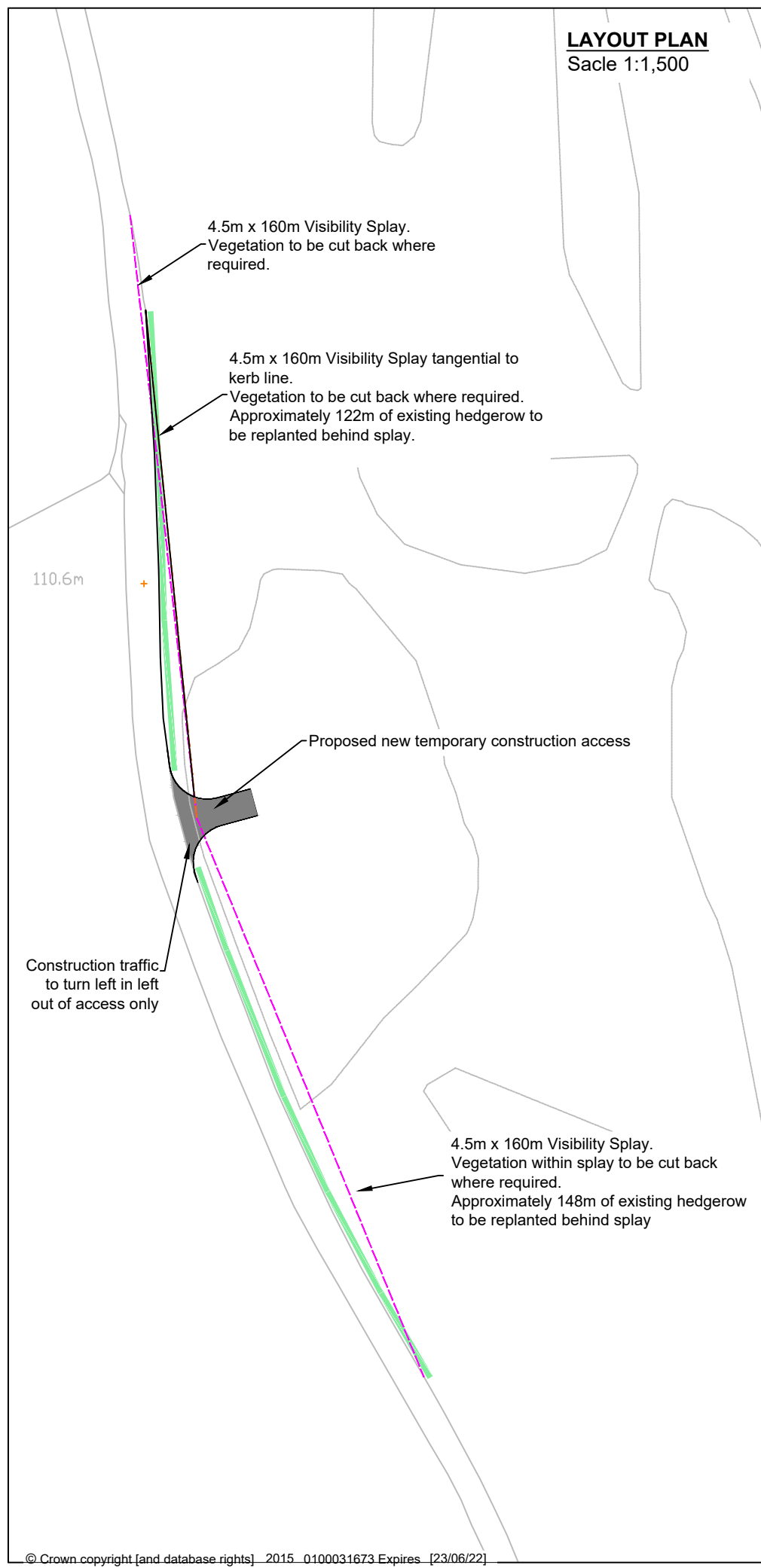


TVGC-009\_416.00492.00057.07.H003.4 Proposed Southern Construction Access.dwg

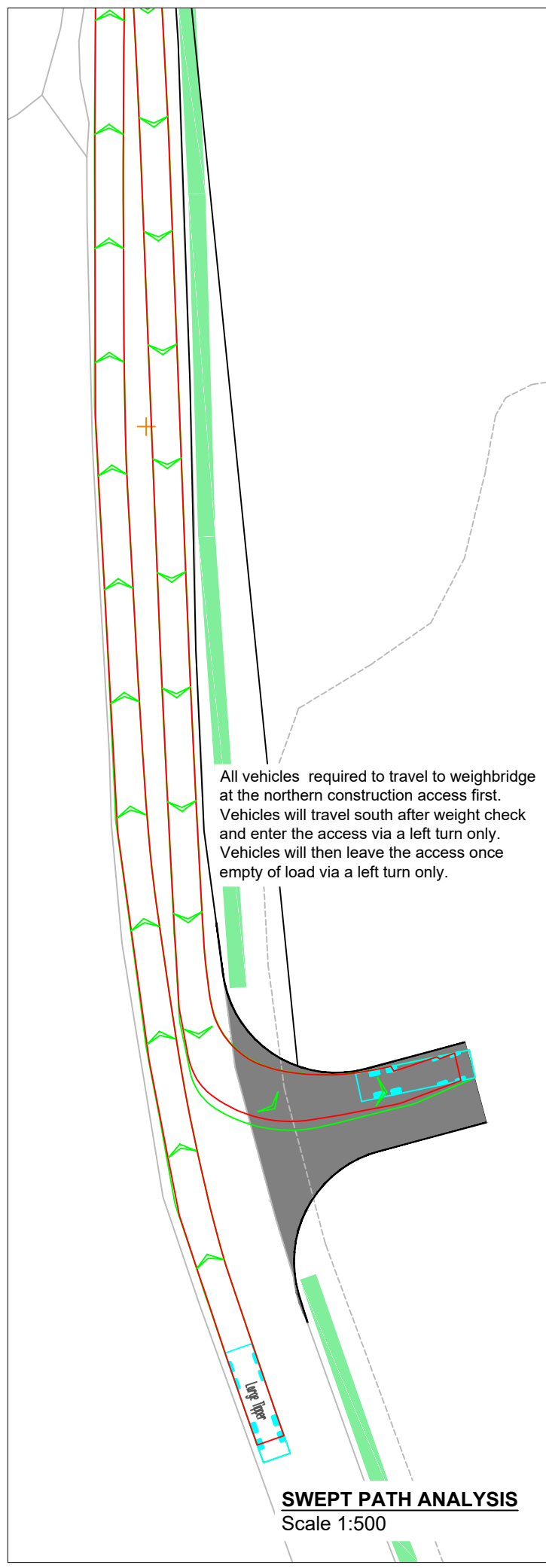
**LAYOUT PLAN**  
Scale 1:1,500



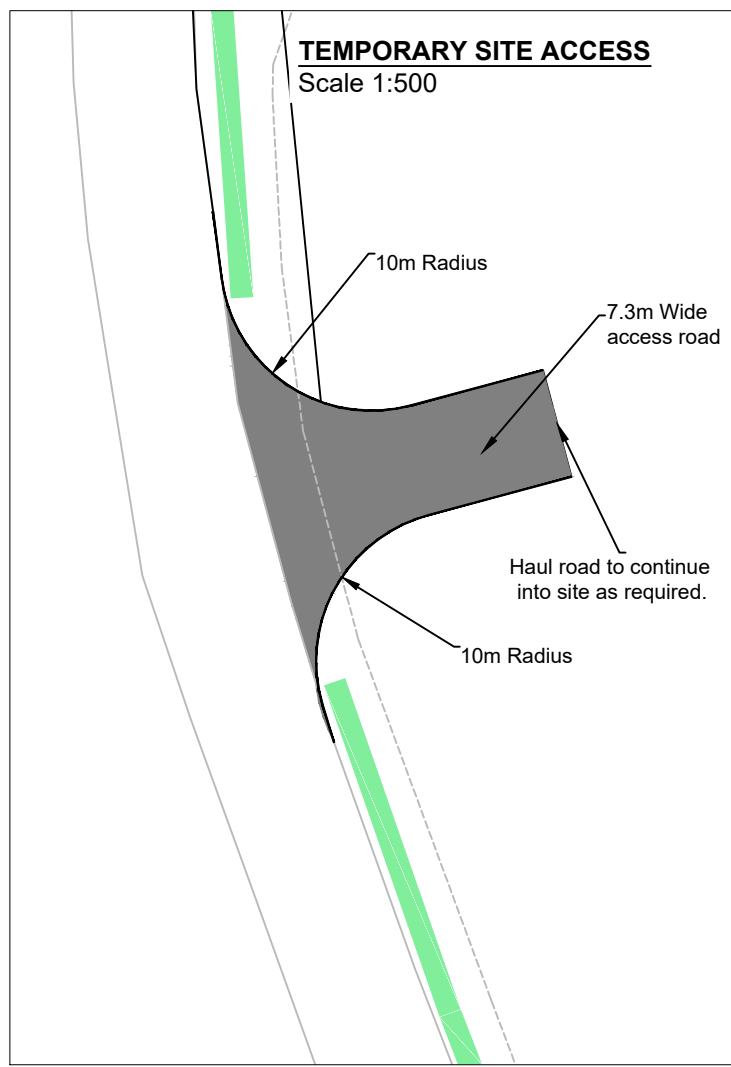
© Crown copyright [and database rights] 2015 0100031673 Expires [23/06/22]

All vehicles required to travel to weighbridge at the northern construction access first. Vehicles will travel south after weight check and enter the access via a left turn only. Vehicles will then leave the access once empty of load via a left turn only.

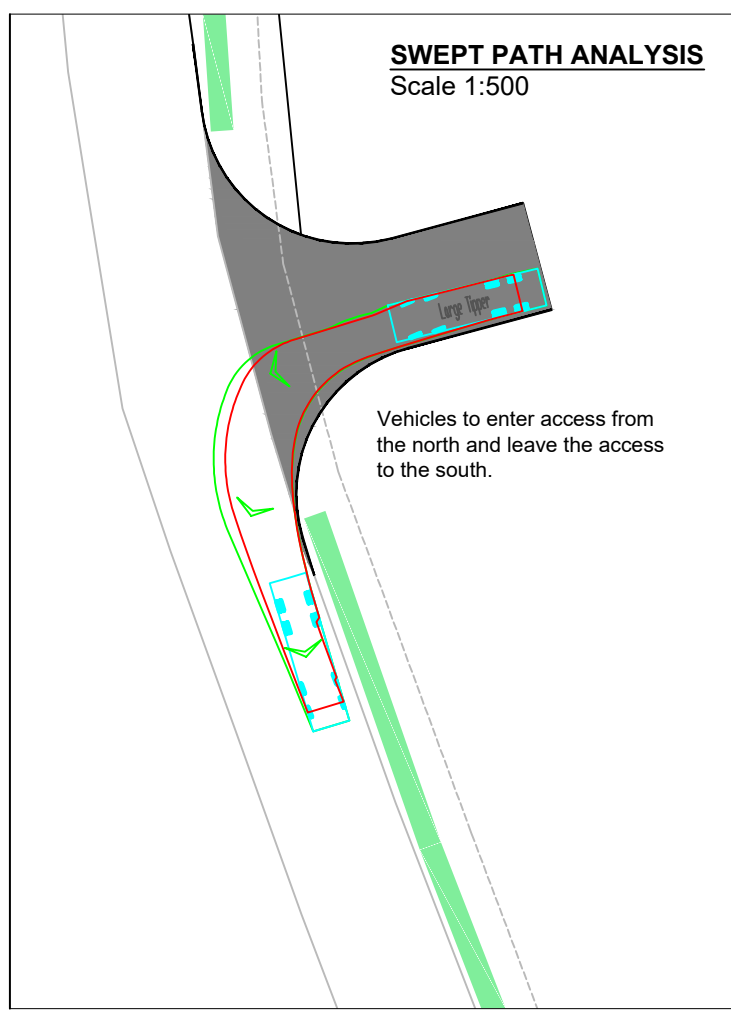
**SWEPT PATH ANALYSIS**  
Scale 1:500



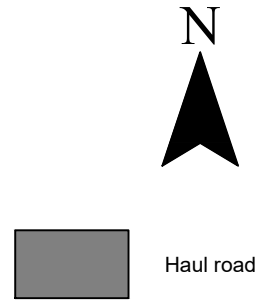
**TEMPORARY SITE ACCESS**  
Scale 1:500



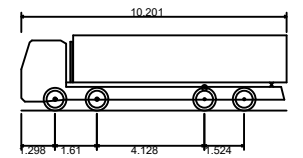
**SWEPT PATH ANALYSIS**  
Scale 1:500



LEGEND



VEHICLE DETAILS



Large Tipper	10.201m
Overall Length	2.500m
Overall Width	2.893m
Overall Body Height	0.343m
Min Body Ground Clearance	2.500m
Max Track Width	6.00s
Lock to lock time	11.550m
Kerb to Kerb Turning Radius	



**SLR**

3RD FLOOR  
THE BREW HOUSE  
JACOB STREET  
BRISTOL, BS2 0EQ

T: 01179 064280  
www.slrconsulting.com

TEST VALLEY GOLF CLUB  
PLANNING  
TEMPORARY CONSTRUCTION  
ACCESS (SOUTH)

TVGC - 009 Rev 1

Scale AS SHOWN @ A3 Date MARCH 2022